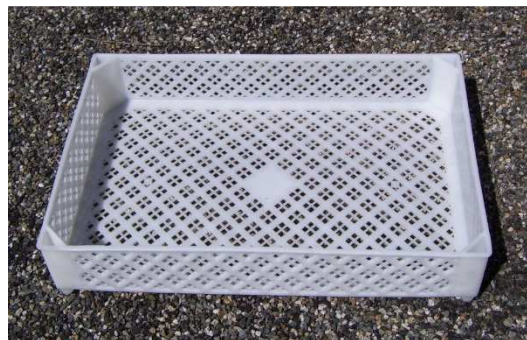


SPECIALIST INJECTION/EXTRUSION
**OPEN-WEAVE TRAY WITHOUT RAISED
TECHNICAL SHEET FT J1135**

General characteristics :

Outside dimensions in mm	570x380x100 (<i>length x width x height</i>)
Weight en Kg	1.15
Material	PEHD
Capacity in liters	20 liters

Product options :

Open-weave/solid	by request
Raised corners 20 mm	by request
Handle	No
Colors	by request
Stamping	by request

Transport organisation :

Product quantity/pallet	100
Pallet unit weight in Kg	180 (<i>pallet weight not included</i>)
Pallet unit dimension in mm	1000x1200
Height in mm	2500 (<i>without pallet height</i>)
Product quantity/conteneur 20'	1150 units
Product quantity/conteneur 40'	2710 units

SPECIALISTE INJECTION/EXTRUSION

Technical characteristics :

- Temperature resistant
- High mechanical resistance
- Easy cleaning/maintenance
- Insensitivity to diverse solvents and cleaning fluids
- UV resistance guaranteed
- Food safe
- High resistance to weight and shocks

Trays can be open-weave or solid according to one's needs, with or without 20 mm raised corners for easy shelving.

Customers can choose a wide variety of colors by request and personalize the product with your name.

Range of product illustration

trays in different colors are available



Range of products with same dimensions :



Solid trays without raised corners

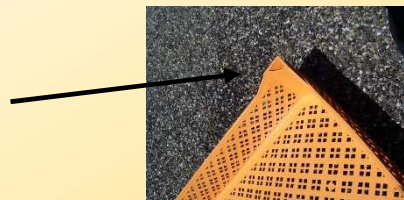


open-weave tray with raised corners



Solid tray with raised corners

Raised corners
Of 20 mm



Updated le 18/11/2014
Trade mark : Cagiplast